



TENON[®]

Self-Consolidating Concrete Mix CI



TENON[™]

Self-Consolidating Concrete Mix CI

One component, fiber-reinforced, polymer-modified

- For full-depth applications
- Enhanced with silica fume
- Fortified with an integral migrating corrosion inhibitor

50 lbs (22.67 kg)

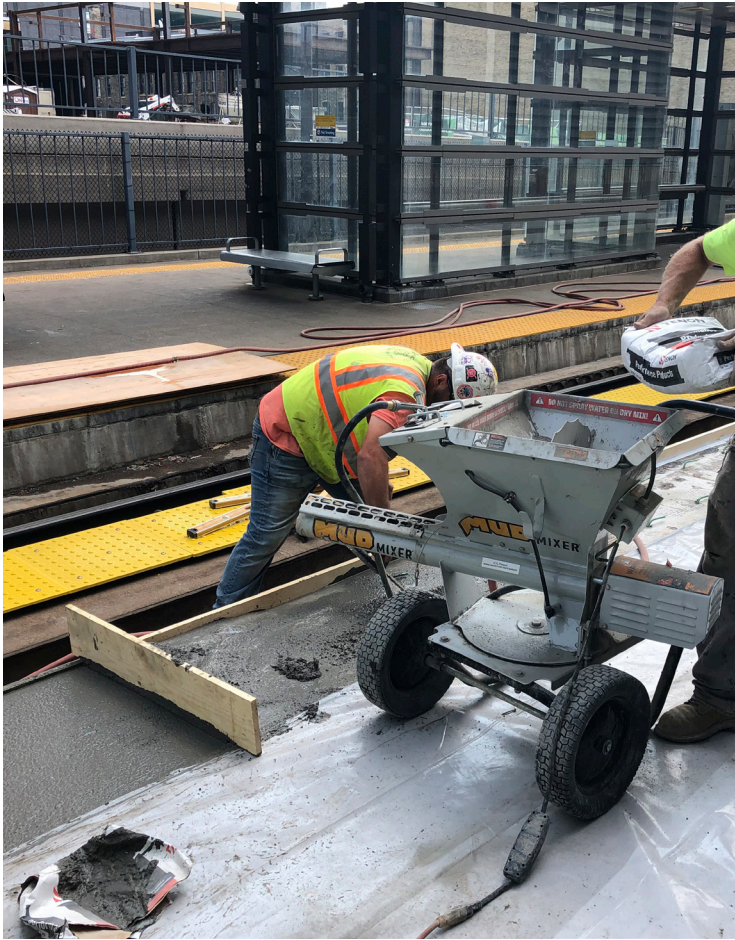
DANGER: IRRITANT TO EYES, CAUSES SKIN IRRITATION. Read warnings on back panel. Wear clothing that prevents contact with skin.

Self-Consolidating

Tenon[®] Self-Consolidating Concrete Mix (SCC) CI is a dry, preblended, one-component, self consolidating, cementitious, polymer-modified concrete mix containing coarse aggregate, silica fume, and an integral migrating corrosion inhibitor. Designed for application thickness minimum of 1 in. (2.5 cm) and maximum thickness of 8 in. (45.7 cm).

Features:

- Excellent placement characteristics
- Polymer-modified for increased adhesion and flexural strength
- Integral penetrating corrosion inhibitor
- Enhanced with silica fume
- Convenient and consistent, made with coarse aggregate to eliminate the need to extend the material in the field, and the risk of reactive aggregate.
- Does not require mechanical vibration consolidation
- Fiber reinforced to control shrinkage cracking



Uses

- Full depth repairs
- On grade, above, and below grade on concrete
- Horizontal surfaces
- Vertical and overhead surfaces when formed and pumped, or poured
- As a structural repair material for parking facilities, industrial plants, walkways, bridges, tunnels, dams, and balconies
- Filler for voids and cavities

Application

Apply only to surfaces that are frost free and above 45°F (7°C) and below 100°F (38°C) within 24 hours of application and 7 days thereafter.

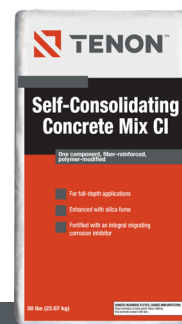
1. Ensure good intimate contact with the substrate is achieved by scrubbing the material into the substrate or by other suitable means such as vibration of the material or pumping under pressure. Vibrate form while pouring or pumping. Pump with a variable pressure pump.
2. Continue pumping until a 3 to 5 psi increase in normal line pressure is evident then STOP pumping. Form should not deflect. Vent to be capped when steady flow is evident, and forms stripped when appropriate.

Coverage

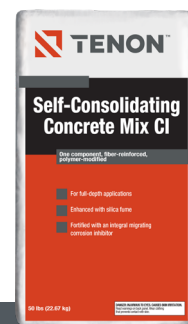
50 lb. (22.7 kg) bag yields 0.45 cu. ft. (0.013 m³)

Available In:

Tenon Self-Consolidating Concrete Mix CI is available in a 50 lb. bag. Also available with integral water repellent (IWR).



50 lb. bag
BOM #112026



IWR 50 lb. bag
BOM #114393

For professional use only.

It is the responsibility of the installer/applicator to ensure the suitability of the product for its intended use. For technical assistance, please contact TCC Materials. To acquire technical and safety literature, please visit our website.