

COLOR SELECTION GUIDE



GLACIER GRAY



GOLDEN WHEAT



BEDROCK BLEND



SPLITROCK BLEND



COCOA BROWN

www.amconconcreteproducts.com

The colors in print may not be an exact representation of the actual color.
Contact your sales representative for color samples.

KEYSTONE INTERMEDIATE



ADVANTAGES:

- Available in Curved or Straight faces
- Angled sides for easy curves
- Excellent for small to medium walls
- Minimum radius with no cutting is 3.2' from face of the unit (15 blocks)



Unit	Pieces/ Cube	Block Height	Block Width	Block Depth	Block Weight	Sq. Ft/ Face	Cube Weight
6" Straight	36	6"	16"	10"	66 lbs.	.67	2,376
6" Curved	36	6"	16"	10"	61 lbs.	.67	2,196
3" Uni. Cap**	54	3"	18/12"	10 ½"	38 lbs.	.31	2,052
6" Corner	48	6"	16"	8"	60 lbs.	1	2,880
6" Step	24	6"	16"	16"	120 lbs.	.67	2,880

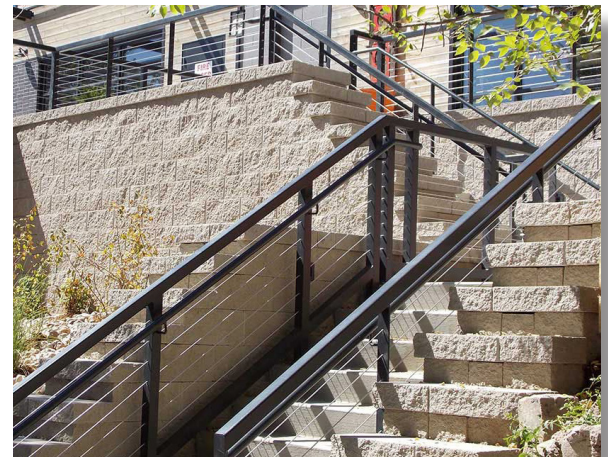
COMPAC

KEYSTONE COMPAC



ADVANTAGES:

- Units have a "tail" for easier handling
- Open cores for drainage and connection
- Pins allow for three setback options
- Excellent for medium to large walls
- Minimum radius as tight as 5' from face



Unit	Pieces/ Cube	Block Height	Block Width	Block Depth	Block Weight	Sq. Ft/ Face	Cube Weight
8" Straight	32	8"	18"	12"	92 lbs.	1	2,944
8" Curved	32	8"	18"	12"	89 lbs.	1	2,848
4" Uni. Cap**	45	4"	18/14"	10 ½"	54 lbs.	.45	2,430
8" Corner	30	8"	18"	9"	103 lbs.	1.5	3,090