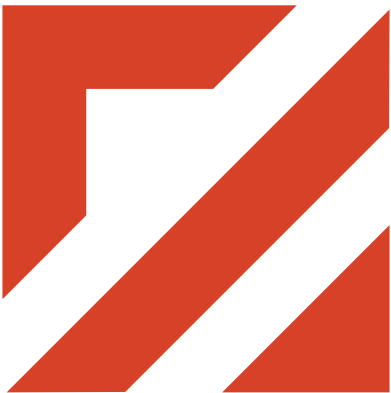


®

FENON



CLEANERS, ADDITIVES & ADMIXTURES
Product Catalog



A TCC Materials® Brand





PERFORMANCE BUILT IN

Tenon’s portfolio of specialty concrete, repair, restoration, and chemical products is professionally formulated for reliability and ease of use. With Tenon, performance is built in, giving construction professionals the confidence and peace of mind for consistent, trusted results.



Tenon® Product Categories

- Mortars & Grouts
- Cement & Concrete
- Repair & Restoration
- Construction Chemicals
- Cleaners, Additives
& Admixtures

Cleaners, Additives & Admixtures

Welcome to Tenon’s Cleaners, Additives & Admixtures Product Catalog - this catalog emphasizes not only product features and benefits but also application guidance, helping you select the right products for each project.

Product Types

Cleaners.....	4
Additives & Admixtures.....	9
Form Release Oils.....	17
Product Details.....	14



CLEANERS

Cleaners remove dirt, efflorescence, and construction residues from concrete and masonry surfaces, restoring appearance while maintaining surface integrity.

Concrete & Masonry Dissolver



1 gal. Bottle BOM #120911

5 gal. Pail BOM #120912

See pg. 18 for all available sizes.

Concrete & Masonry Dissolver is an environmentally friendly, non-acid cleaner that safely removes cured concrete, mortar, grout, and stucco buildup from tools, forms, mixers, and equipment.

Features & Benefits

- Ready to use and fast acting
- Removes concrete without scraping or acid washing
- 100% biodegradable and non-toxic
- Non-corrosive, non-fuming, and safe for most surfaces

Use For:

- Cleans tools, mixers, forms, and vehicles with cured concrete residue
- Prepares concrete surfaces by lightly etching for coating adhesion

Concrete & Mortar Dissolver RM



5 gal. Pail BOM #133010

See pg. 18 for all available sizes.

Concrete & Mortar Dissolver RM is an environmentally friendly, foaming, non-acid liquid cleaner designed to remove uncured concrete and mortar from tools and equipment.

Features & Benefits

- Ready to use and fast acting
- 100% biodegradable and non-toxic
- Non-corrosive, non-fuming, and safe on painted surfaces
- Removes concrete without scraping or acid washing
- Foaming action

Use For:

- Cleans tools, trucks, and equipment with uncured concrete residue
- Prepares concrete surfaces by lightly etching for coating adhesion

Dissolve SiO₄



Dissolve SiO₄ is a ready-to-use cleaner for removing cured liquid silicate sealers and hardeners from spray equipment, tools, and accessories.

Features & Benefits

- Safe for steel, brass, and plastic equipment
- Effectively cleans sprayer tips and parts
- Solvent-free and pre-diluted for convenience

1 gal. Bottle BOM #115186

5 gal. Pail BOM #115187

Use For:

- Cleans cured silicate residue from sprayers, tips, and tools

Paver Wash



Paver Wash is a phosphoric acid-based cleaner that removes efflorescence, rust stains, and organic buildup.

Features & Benefits

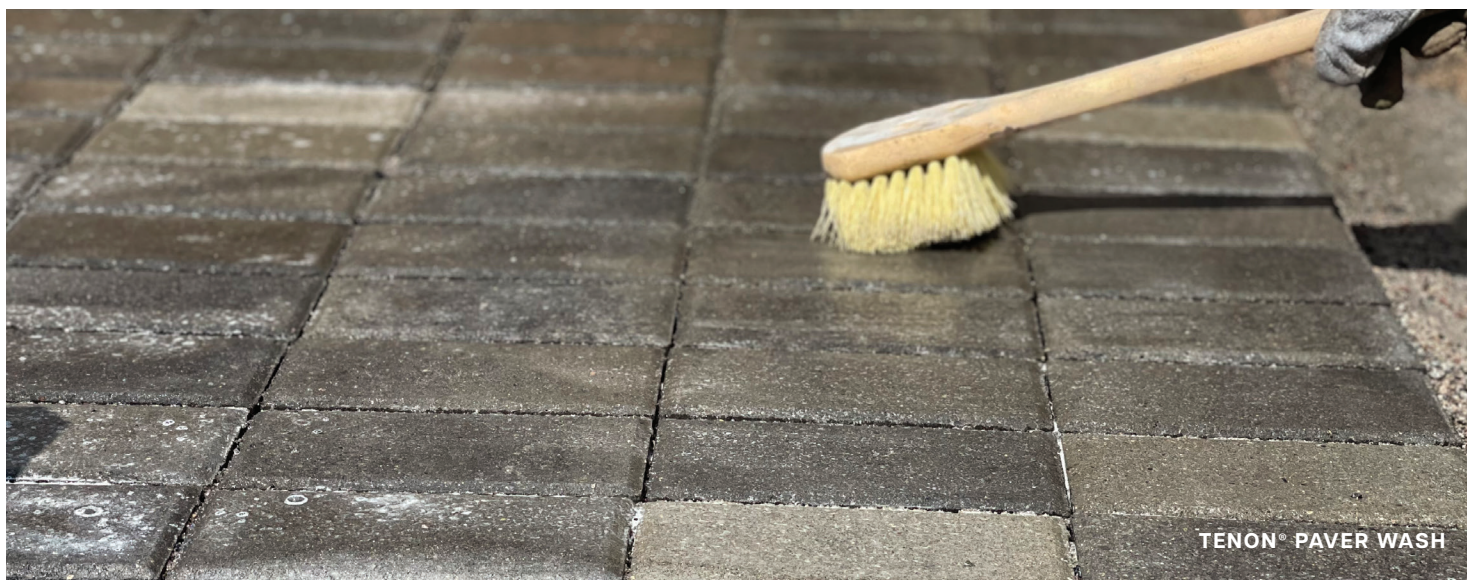
- Cleans and restores surface color
- Dissolves rust, mineral deposits, and organic buildup
- Prepares surfaces for sealing
- Ready to use; no mixing required

1 gal. Bottle BOM #129800

5 gal. Pail BOM #129810

Use For:

- Pavers, brick, masonry, and concrete
- Ideal for surface preparation before applying sealers



TENON® PAVER WASH



 **Project Spotlight**

CEMSTONE FACILITY

Rosemount, MN

Concrete & Mortar Dissolver RM at Work

Cemstone has hundreds of ready-mix trucks that operate everyday in the Upper Midwest! Inevitably, these trucks need to be cleaned to keep them functioning at full capacity and looking their best. Cemstone uses Tenon® Concrete & Mortar Dissolver RM as part of its routine cleaning process. Tenon Concrete & Mortar Dissolver RM is specifically designed for use in the ready-mix industry to clean equipment while the concrete and mortar are still in their plastic state. These factors make it a great option for Cemstone's regular maintenance routine!







Restoration Cleaner

Restoration Cleaner is a phosphoric acid-based cleaner that removes efflorescence, rust stains, and mineral deposits.

Features & Benefits

- Cleans and restores surfaces
- Removes efflorescence and mineral buildup
- Enhances sealer performance
- Ready to use; no mixing required

1 gal. Bottle BOM #120523

5 gal. Pail BOM #120524

Use For:

- Concrete, masonry, brick, and pavers
- Ideal for preparing surfaces before applying sealers



Surface Renew

Surface Renew is a clear cleaning solution designed to revitalize aged, sealed concrete surfaces.

Features & Benefits

- Cleans and renews acrylic-based curing and sealing compounds
- Redistributes existing sealer from unworn to worn areas
- Extends the life of sealed concrete surfaces
- Easy spray or roller application

1 gal. Bottle BOM #113470

5 gal. Pail BOM #113490

Use For:

- Previously cured and sealed concrete surfaces
- Interior (with proper ventilation) or exterior applications
- Vertical or horizontal surfaces
- Industrial, commercial, and residential projects



Xylene

Xylene is a powerful solvent for cleaning tools, sprayers, and equipment used in concrete and masonry.

Features & Benefits

- Cleans tools and equipment effectively
- Softens existing acrylic sealers
- VOC compliant in AIM, OTC, LADCO, and Canada

Use For:

- Cleaning tools, sprayers, and application equipment
- Softening or re-emulsifying acrylic sealers
- Maintenance of concrete and masonry coating tools



ADDITIVES & ADMIXTURES

Additives and admixtures improve workability, modify set times, enhance strength, and optimize durability in concrete and mortar mixes for specific construction needs.

Air Entrainment



1 gal. Bottle BOM #120377

5 gal. Pail BOM #120879

See pg. 18 for all available sizes.

Air Entrainment is a ready-to-use aqueous solution formulated to entrain small, stable air voids in concrete and mortar mixes.

Features & Benefits

- Improves workability and freeze/thaw resistance
- Increases resistance to deicing salts and scaling
- Reduces permeability, segregation, and bleeding
- Meets ASTM C260 for air-entraining admixtures
- Increases plasticity, water retention, and cohesion

Use For:

- Exterior applications
- Concrete and cement mixes
- Masonry mortars

CONPROCO® Conpro Primer



1 gal. Bottle BOM #115273

5 gal. Pail BOM #115409

Conproco Conpro Primer is a water-based bonding primer applied by spray, roller, or brush. Designed for overlays and repair materials on hardened concrete, it offers a long open time and meets ASTM C882.

Features & Benefits

- Single component; no mixing or waste
- Apply up to 72 hours before covering
- Color trigger: Pink when wet; turns orange when ready (~30 mins)
- Alkali-Material activated by cement alkalinity
- Breathable and water-vapor permeable
- Not re-emulsifying; resistant to water once cured
- Water-based, low odor, and non-flammable
- Easy application with low-pressure or airless sprayer

Use For:

- Bonding primer for concrete overlays
- Primer for repair materials on concrete surfaces



Project Spotlight

MINNESOTA NATIONAL GUARD TRAINING CENTER

Camp Ripley, Little Falls, MN

Air Entrainment at Work

In support of ongoing facility improvements and repairs, the Minnesota National Guard turned to Tenon® for concrete expansion joint repair in the parking lot at the training center in Little Falls, MN. This application required added durability so the project engineer selected Tenon's Air Entrainment and Concrete Patching Mix as those products can handle the freeze/thaw cycles experienced during harsh Minnesota winters.

Camp Ripley is a 53,000-acre regional training center hosting numerous ranges and state-of-the-art facilities to support the training requirements of military and civilian agencies within a realistic environment. The training center provides service, resources, and facilities that empower organizations to conduct essential training. Supporting a wide range of customers, from local law enforcement agencies to all branches of the Department of Defense, Camp Ripley is a primary training facility for Minnesota National Guard units.



CONPROCO®

Conpro Start



5 gal. Pail BOM #115281

Conproco Conpro Start is a water-based consolidant applied by spray, roller, or brush to stabilize and strengthen concrete, masonry, and stone.

Features & Benefits

- Reacts with calcium hydroxide to increase surface density and resist carbonation
- Does not form a surface film or interfere with bonding of coatings or repair mortars
- Water-based, low odor, and non-flammable
- Increases compressive strength of cement-based materials
- Breathable and water-vapor permeable
- Low viscosity for deep penetration
- Ready to use; no mixing required

Use For:

- Restore surface integrity and strengthen substrates before applying coatings or repair materials

Fast-Set Liquid Activator



1 gal. Bottle BOM #120593

5 gal. Pail BOM #120770

Fast-Set Liquid Activator is a liquid accelerator designed for use with Tenon® Air-Entrained Concrete Patching Mix AE or Tenon® Construction Grout.

Features & Benefits

- Rapid strength gain and reduced closure time
- Easy to use; no extra water required
- Cold weather accelerator
- Durable, non-chloride, and non-corrosive
- Meets ASTM C494 for chemical admixtures

Use For:

- High-traffic pavements and bridge decks
- Parking structures and industrial floors
- Cold-weather grouting applications

CONPROCO®

K-88 Admixture



1 gal. Bottle BOM #115343

5 gal. Pail BOM #115344

Conproco Color K-88 Admixture is a 100% acrylic admixture designed to add color to cementitious materials.

Features & Benefits

- Minimizes shrinkage-induced cracking
- Enhances chemical adhesion to substrates
- Increases compressive and tensile strengths
- Improves freeze/thaw resistance
- Increases density and reduces water penetration
- Provides excellent color dispersion throughout the mix
- Available in 14 earthtone colors
- Reduces the need for moist curing in most cases

Use For:

- Interior/exterior, above or below grade
- New or existing concrete
- Fresh concrete curing and aged concrete renovation

Level-Flo Primer Pro



1 gal. Bottle BOM #129436

5 gal. Pail BOM #129438

Level-Flo Primer Pro is a high-quality vinyl acetate-ethylene copolymer primer designed to improve bonding for Tenon® Level-Flo self-leveling products and other cement-based repairs.

Features & Benefits

- Enhances adhesion on challenging substrates
- Concentrated formula; dilute on site
- Solvent-free and versatile
- Improves self-leveling flow and underlayment bonding

Use For:

- Concrete, including burnished surfaces
- Cement terrazzo and backer board
- Ceramic tile
- Gypsum underlayment
- Exterior grade plywood/OSB
- Residual cutback and carpet adhesive
- Well-bonded resilient flooring and epoxy coatings

Mighty Bond



1 gal. Bottle BOM #120525

5 gal. Pail BOM #120526

See pg. 18 for all available sizes.

Mighty Bond is a high-solids acrylic liquid bonding agent that improves adhesion, strength, and durability of cement-based mortars, repair products, tile setting mortars, and grouts.

Features & Benefits

- Improves bond strength and tensile as well as flexural and compressive strength
- Solvent-free and VOC compliant
- Freeze/thaw and salt resistant
- Enhances adhesion, durability, and curing
- Exceeds ASTM C1059 and ANSI A118.4 and A118.11
- Approved by Mn DOT as a special surface finish system
- Versatile for mortars, patches, grouts, underlayments, and tile setting
- Used as an admixture or as a paint-on bonding agent.

Use For:

- Additive for Portland-cement repair products, grouts, non-modified tile setting mortars on walls, floors, and ceilings
- Suitable for ceramic, porcelain, glass, quarry tile, pavers, and non-moisture sensitive marble and slate
- Can be used over concrete, tile backerboard, gypsum board, cutback adhesive, resilient flooring, plywood (interior floors), cured concrete, and prepared tile or vinyl composite tile (VCT)

Set Accelerator



1 gal. Bottle BOM #120376

5 gal. Pail BOM #129641

Set Accelerator is a non-chloride, non-corrosive liquid admixture (ASTM C494 Type C) that speeds cement hydration, improving workability and early strength.

Features & Benefits

- Non-chloride, non-corrosive
- Meets ASTM C494 & ASTM C1384
- Increases early compressive strength and workability
- Speeds initial and final set and curing time
- Enables earlier finishing and form removal

Use For:

- Interior and exterior concrete and masonry
- Accelerates set time to reduce project duration
- Suitable for freeze/thaw conditions



Set Retarder

Set Retarder is a ready-to-use liquid admixture that slows the setting time of Tenon® rapid-setting concrete repair products, extending workability and allowing proper placement and finishing.

Features & Benefits

- Extends working time for easier placement and finishing
- Controls rapid set in warm weather conditions
- Meets ASTM C494/C494M Type B retarder specification
- Compatible with select rapid-setting repair products
- Helps reduce cracking and improves final surface quality

Use For:

- High-traffic pavement repairs
- Full-depth concrete placements
- Parking structures
- Bridge decks
- Industrial floors
- Precast concrete repairs

1 gal. Bottle BOM #130030

5 gal. Pail BOM #130040



SuperFlow

SuperFlow water-reducing admixture is a versatile, full-range additive that enhances concrete workability and flowability, including applications for self-consolidating concrete. It complies with ASTM C494/C494M as both a Type A water-reducing and Type F high range water-reducing admixture.

Features & Benefits

- Non-corrosive and non-chloride
- Flexible dosage for normal, mid-range, and high-range water reduction (5% - 40%)
- Excellent early strength development
- Controls setting characteristics for optimized placement
- Balances slump retention with setting time
- Maintains consistent air entrainment
- Facilitates easier and faster concrete pumping
- Improves finishing characteristics of flatwork
- Reduces segregation at designed slump
- State DOT approvals available; Contact a sales representative

Use For:

- Concrete and mortar mixes with varying water reduction needs
- Applications requiring critical workability and controlled setting times
- Projects benefiting from high early and ultimate strengths
- Sustainable, high durability concrete applications
- Self-consolidating concrete (SCC) production

1 gal. Bottle BOM #113500

5 gal. Pail BOM #113510

See pg. 18 for all available sizes.



TraxGrip

TraxGrip provides a subtle, slip-resistant texture to concrete surfaces as a clear polymer added to curing and sealing compounds.

Features & Benefits

- Provides nearly invisible slip-resistant protection
- VOC compliant
- Easy to apply using brush, roller, or low-pressure spray
- Compatible with concrete surfaces previously sealed with Tenon® Cure & Seal
- Can be reapplied to restore texture in high traffic areas

Use For:

- Exterior/interior concrete
- Existing sealed or unsealed concrete
- Suitable for colored, stamped, and non-colored concrete
- High traffic areas requiring enhanced slip resistance, such as entrances, walkways, steps, patios, and pool decks

3.2 oz. Jar BOM #114637

1 lb. Jar BOM #114638

Trowel Ice



Trowel Ice is a VOC-compliant finishing aid that lubricates freshly placed concrete, improving workability and surface finishing, especially in harsh conditions.

Features & Benefits

- Reduces wear on finishing tools
- Minimizes cracking, scaling, and crazing
- Low VOC, odorless, and water-based
- Helps with dry shake hardener application
- Enhances surface hardness and abrasion resistance
- Improves concrete workability without adding water

1 gal. Bottle BOM #114864

5 gal. Pail BOM #114866

See pg. 19 for all product variants.

Use For:

- Fresh concrete finishing in harsh conditions (heat, wind, or low humidity)
- Concrete mixes with fume silica, Type 1L cement, or air-entrained admixtures
- Improving surface durability and reducing surface defects
- Surface hardener and desifier
- Application with dry shake hardeners for floors



TENON® TROWEL ICE

X-Tender



X-Tender is a VOC-compliant concentrate (mixed 1:9 with water) that creates a sprayable monomolecular polymer film on freshly placed concrete to reduce moisture loss and prevent shrinkage cracking.

Features & Benefits

- Reduces shrinkage and cracking from evaporation in hot, dry, or windy conditions
- Compatible with cures, sealers, and toppings
- Minimizes wind crusting
- Increases productivity
- Water-based, odorless, and VOC compliant

1 gal. Bottle BOM #114871

5 gal. Pail BOM #114872

Use For:

- Fresh concrete surfaces in low humidity or high temperature environments
- Preventing plastic shrinkage and cracking
- Before applying curing compounds, sealers, or toppings



TENON® X-TENDER



FORM RELEASE OILS

Form release oils prevent concrete from sticking to formwork, ensuring clean removal, protecting surface finishes, and extending the life of forms in repeated-use applications.



5 gal. Pail BOM #113430

See pg. 19 for all available sizes.

FormGuard

FormGuard is a VOC-compliant, ready-to-use petroleum-based liquid release agent that prevents concrete from bonding to forms and liners.

Features & Benefits

- Chemically reactive for positive release
- Extends life of wood and steel forms
- Prevents steel corrosion and form deterioration
- Light citrus scent
- Reduces cleaning and repair
- Ready to use; no mixing required
- VOC compliant

Use For:

- Concrete form release on steel, aluminum, fiberglass, plywood, epoxy, and urethane-coated forms
- Protects and extends life of forms
- Suitable for all concrete forming applications



5 gal. Pail BOM #113764

See pg. 19 for all available sizes.

FormGuard Citrus

FormGuard Citrus is a VOC-compliant, ready-to-use, petroleum-based, chemically reactive concrete form release agent. It prevents concrete bonding to forms and liners, extending form life.

Features & Benefits

- Chemically reactive
- Positive release
- Prevents steel corrosion and form deterioration
- Pleasant citrus scent
- Reduces cleaning and repair
- Prevents concrete bonding to forms
- Ready to use; no mixing needed
- VOC compliant

Use For:

- Release agent for steel, aluminum, fiberglass, plywood, epoxy-coated, and urethane-coated concrete forms
- Ideal for all concrete forming applications
- Extends the durability and lifespan of forms

Cleaners

Concrete & Masonry Dissolver	28 oz. (0.83 L) Bottle	#121006	pg. 4
Concrete & Masonry Dissolver	1 gal. (3.78 L) Bottle	#120911	pg. 4
Concrete & Masonry Dissolver	5 gal. (18.9 L) Pail	#120912	pg. 4
Concrete & Masonry Dissolver	55 gal. (208.2 L) Drum	#121105	pg. 4
Concrete & Masonry Dissolver RM	5 gal. (18.9 L) Pail	#133010	pg. 4
Concrete & Masonry Dissolver RM	55 gal. (208.2 L) Drum	#130000	pg. 4
Concrete & Masonry Dissolver RM	275 gal. (1041 L) Tote	#129960	pg. 4
Dissolve SiO ₄	1 gal. (3.78 L) Bottle	#115186	pg. 5
Dissolve SiO ₄	5 gal. (18.9 L) Pail	#115187	pg. 5
Paver Wash	1 gal. (3.78 L) Bottle	#129800	pg. 5
Paver Wash	5 gal. (18.9 L) Pail	#129810	pg. 5
Restoration Cleaner	1 gal. (3.78 L) Bottle	#120523	pg. 8
Restoration Cleaner	5 gal. (18.9 L) Pail	#120524	pg. 8
Surface Renew	1 gal. (3.78 L) Bottle	#113470	pg. 8
Surface Renew	5 gal. (18.9 L) Pail	#113490	pg. 8
Xylene	1 gal. (3.78 L) Bottle	#113440	pg. 8
Xylene	5 gal. (18.9 L) Pail	#113460	pg. 8

Additives & Admixtures

Air Entrainment	1 gal. (3.78 L) Bottle	#120377	pg. 9
Air Entrainment	5 gal. (18.9 L) Pail	#120879	pg. 9
Air Entrainment	55 gal. (208.2 L) Drum	#130070	pg. 9
Conproco® Conpro Primer	1 gal. (3.78 L) Bottle	#115273	pg. 9
Conproco® Conpro Primer	5 gal. (18.9 L) Pail	#115409	pg. 9
Conproco® Conpro Start	1 gal. (3.78 L) Bottle	#115280	pg. 12
Conproco® Conpro Start	5 gal. (18.9 L) Pail	#115281	pg. 12
Fast-Set Liquid Activator	1 gal. (3.78 L) Bottle	#120593	pg. 12
Fast-Set Liquid Activator	5 gal. (18.9 L) Pail	#120770	pg. 12
Conproco® K-88 Admixture	1 gal. (3.78 L) Bottle	#115343	pg. 12
Conproco® K-88 Admixture	5 gal. (18.9 L) Pail	#115344	pg. 12
Level-Flo Primer Pro	1 gal. (3.78 L) Bottle	#129436	pg. 13
Level-Flo Primer Pro	5 gal. (18.9 L) Pail	#129438	pg. 13
Mighty Bond	1 gal. (3.78 L) Bottle	#120525	pg. 13
Mighty Bond	5 gal. (18.9 L) Pail	#120526	pg. 13
Mighty Bond	55 gal. (208.2 L) Drum	#130020	pg. 13
Set Accelerator	1 gal. (3.78 L) Bottle	#120376	pg. 13
Set Accelerator	5 gal. (18.9 L) Pail	#129641	pg. 13
Set Retarder	1 gal. (3.78 L) Bottle	#130030	pg. 14
Set Retarder	5 gal. (18.9 L) Pail	#130040	pg. 14
Super Flow	1 gal. (3.78 L) Bottle	#113500	pg. 14
Super Flow	5 gal. (18.9 L) Pail	#113510	pg. 14
Super Flow	55 gal. (208.2 L) Drum	#113434	pg. 14
TraxGrip	3.2 oz. (0.09 kg) Jar	#114637	pg. 14
TraxGrip	1 lb. (0.45 kg) Jar	#114638	pg. 14
Trowel Ice (RTU)	1 gal. (3.78 L) bottle	#114864	pg. 15
Trowel Ice (Concentrate)	1 gal. (3.78 L) bottle	#114865	pg. 15

Trowel Ice (RTU)	5 gal. (18.9 L) Pail	#114866	pg. 15
Trowel Ice (Concentrate)	5 gal. (18.9 L) Pail	#114867	pg. 15
Trowel Ice (RTU)	55 gal. (208.2 L) Drum	#115195	pg. 15
Trowel Ice (RTU)	275 gal. (1041 L) Tote	#115196	pg. 15
X-Tender	1 gal. (3.78 L) Bottle	#114871	pg. 16
X-Tender	5 gal. (18.9 L) Pail	#114872	pg. 16

Form Release Oils

FormGuard	5 gal. (18.9 L) Pail	#113430	pg. 17
FormGuard	55 gal. (208.2 L) Drum	#113398	pg. 17
FormGuard	275 gal. (1041 L) Tote	#113399	pg. 17
FormGuard Citrus	5 gal. (18.9 L) Pail	#113764	pg. 17
FormGuard Citrus	55 gal. (208.2 L) Drum	#113765	pg. 17
FormGuard Citrus	275 gal. (1041 L) Tote	#113766	pg. 17

Contact Us

For all product information and availability, please contact your local sales representative.



2025 Centre Pointe Blvd
Mendota Heights, MN 55120

651-688-9116

www.tccmaterials.com



TENON[®]

A TCC Materials[®] Brand