

PRODUCT DESCRIPTION

- Black slag abrasive
- Hard & sharp
- Consistent sizing
- Fresh water washed
- Safe to Use
- Works with all blasting equipment
- 1.5-2.0 anchor profile
- Blend of 40-80 extra fine and 30-60 fine grit
- For use with a 1/8 in. (3 mm) nozzle

WHEN/WHERE TO USE

- Use to remove rust and paint
- Works well for cleaning stone and brick
- Use for glass frosting
- Use for etching
- Use for carving
- Works great for exposing aggregates

ADVANTAGES

- Product enables blasters to work faster and more efficiently
- Safer product than silica sand
- Angular shape helps cut through tough materials
- Recycled coal slag

TYPICAL YIELD

Varies upon surface to be blasted.

PACKAGING

50 lb. (22.7 kg) bag (BOM #106908)

APPLICATION

When working with Black Blast, use gloves to prevent skin abrasion and safety glasses to prevent irritation.

Use blast material in the cleaning or preparing of a surface by forcibly propelling a stream of abrasive material against it. Use the material to make it smoother, remove surface contaminants or to roughen a surface. Can be used for removal of paint and to create a proper surface for a new coating. Proper use and sizing will give a precision finish.

Black Blast is made for abrasive blasting applications. Dry abrasive blasting applications are typically powered from a diesel air compressor. Most applications involve a pressurized vessel that contains the abrasive and meters it into the compressed air stream. Wet blasting is accomplished by injecting the abrasive into a pressurized water stream or creating a slurry of abrasive and water that is pressurized or introduced into a compressed air stream. Wet blasting is often used in applications where the minimal dust generation is desired. Portable applications may or may not recycle the abrasive and portable dry blasting generally does not attempt to contain or minimize the dust generated from the operation.

CLEAN UP

Clean up excess blasting material and blasted surface material with a vacuum or a broom.



WARNING

Black Blast contains a low free silica material. When used as a sand blast abrasive follow these safety precautions.

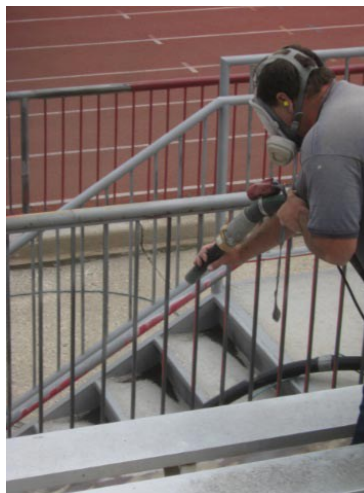
- Material may be irritating to the skin and eyes. Use protective equipment, abrasive resistant clothing, safety shoes, leather gloves, eye and ear protection and approved helmet.
- Avoid breathing dust. Prolonged exposure to high concentrations of dust may lead to a depression of the pulmonary function.
- Use of OSHA/NIOSH approved hood or respirator is recommended.

First Aid Measures: Seek Medical Attention

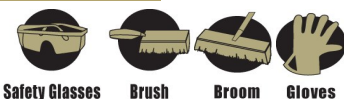
- Eyes: Clean with water.
- Ingestion: May lead to gastrointestinal irritation. If ingestion occurs, drink large amounts of water.
- Gross inhalation: Remove to fresh air.

WARRANTY

Seller warrants that its product will conform to and perform in accordance with the product specifications. The foregoing warranty is in lieu of all other warranties, expressed or implied, including, but not limited to those concerning merchantability and fitness for a particular purpose. Because of the difficulty in ascertaining and measuring damages hereunder, it is agreed that, Seller's liability to the Buyer shall not exceed the total amount billed and billable to the Buyer for the product hereunder.



Helpful Items:



WARNING: INJURIOUS TO EYES

KEEP OUT OF REACH OF CHILDREN