

PRODUCT DESCRIPTION

Akona® Instant Patching Cement is a high-performance cement used for wide crack filling and other concrete repair needs. It sets rock hard in just 90 minutes. Instant Patching Cement self-bonds to all properly prepared concrete surfaces and develops twice the strength of ordinary concrete.

WHEN/WHERE TO USE

- Interior and exterior repairs
- Steps
- Sidewalks
- Walls and floors
- Patios
- Driveways

ADVANTAGES

- Fast, controlled set
- High strength
- Ideal for deep repairs
- Mix with water or bonding additive

AVAILABLE SIZE

- 10 lb. (4.5 kg) bag (BOM # 102632)

COVERAGE

10 lbs. fills a 1 in. wide x ½ in. deep x 30 ft. long crack (2.5 cm x 1.3 cm x 9.4 m), or 10 sq. ft. (0.9 m³) at ½ in. (0.3 cm) thickness

PREPARATION

Remove all loose or unsound materials. Thoroughly clean surface of dirt, dust, grease, paint, or other contaminants before patching, topping, or placing overlays. Smooth troweled or dense



Helpful Items:



concrete surfaces must be etched or roughened to ensure proper bond adhesion. **Surface should be saturated with water, leaving no puddling, just prior to placement.**

MIXING

Add approximately 1½ pints (.71 L) of clean, cool water per 10 lbs. (4.5 kg) of powder. (Ratio of approximately 2.4 oz. liquid per 1 lb. powder.) Always add powder to liquid to avoid lumps. Mix to a uniform consistency by hand or use a mechanical mixer until a putty-like consistency is reached. Avoid high speed mechanical mixing which can entrap air into the mixture. For additional bond strength to the substrate, use a concrete bonding additive in place of water. For repairs over 1 in. (2.5 cm) thick, add 5 lbs. (2.26 kg) of pea gravel per 10 lbs. of Instant Patching Cement. Apply pea gravel blend up to 2 in. (5 cm) per layer. **MIX ONLY THE QUANTITY THAT CAN BE APPLIED WITHIN 20 MINUTES.**

APPLICATION

For best results, do not apply when temperatures will drop below 40°F (4°C) within 48 hours of application or if rain is forecasted within 24 hours. Do not apply in direct sunlight on hot, windy days. It is recommended that a “slurry coat” (a thin mixture of Instant Patching Cement mixed with water or bonding additive) be applied to the surface just prior to placing the trowelable mixture. This can be applied by gloved hand or brush. This process helps to achieve a better bond to the substrate. Trowel freshly mixed Instant Patching Cement over the wet slurry coat and finish as required. When troweling, be sure to clean the surface of the trowel often with water and use a “light touch” when finishing. Do not over trowel. Protect the surface from use until patch is completely hard and set, on average 4 hours for foot traffic and 24 hours for wheeled traffic depending upon temperatures and humidity. Protect from rain for 4-6 hours. Cover surface with wet burlap or towel overnight to retain moisture. Remove covering and allow to air cure.

CLEAN UP

Typically water, or warm soapy water, will satisfactorily clean tools and hands immediately after using. Dried material requires mechanical removal.



WARNING: INJURIOUS TO EYES

KEEP OUT OF REACH OF CHILDREN

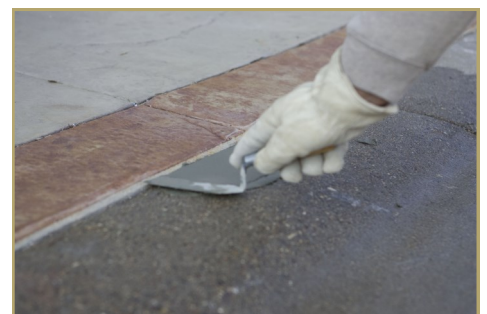
IMPORTANT NOTES

- Rubber gloves and goggles are recommended safety equipment
- Mix with clean potable water or a liquid bonding additive
- Use only clean mixing container and tools
- Store in tightly closed container off the floor in a dry place

Proper application and installation of all AKONA products are the responsibility of the end user.

WARNING

Always read the product SDS and cautionary statements on product container prior to application. Wear proper protective gear as advised on the label and/or SDS. Wash hands thoroughly with warm, soapy water after handling or before eating. Do not take internally. **KEEP OUT OF REACH OF CHILDREN.**





INSTANT PATCHING CEMENT

High-performance, crack filling and repairing cement

©AKONA MANUFACTURING, LLC, A TCC Materials Company • April 2016 • Version 3.0

WARRANTY

Seller warrants that its product will conform to and perform in accordance with the product specifications. The foregoing warranty is in lieu of all other warranties, expressed or implied, including, but not limited to those concerning merchantability and fitness for a particular purpose. Because of the difficulty in ascertaining and measuring damages hereunder, it is agreed that Seller's liability to the Buyer shall not exceed the total amount billed and billable to the Buyer for the product hereunder.

ENVIRONMENTAL ADVISORY

Uncured or crushed cured cement is an environmental hazard, which may adversely affect fish and wildlife. Dispose of construction debris containing cement, including empty bags, at a permitted municipal disposal firm. Do not use crushed concrete as a fill near an aquatic habitat.